

# NetScreen Security Appliances



**NETSCREEN®**  
Scalable Security Solutions



## At a glance

### • Multi-function security appliances

*Integrating security solutions, including stateful inspection firewall, robust DoS protections, high-performance IPSec VPN, and traffic management capabilities; reducing the need for expensive add-ons and licensing*

### • Purpose-built solutions with ASIC-based performance

*Integrated solutions for high reliability and maximum protection combined with hardware accelerated firewall and VPN throughput*

### • Easy to deploy and manage

*Deploy in minutes with built-in management capabilities and policy-based central management with NetScreen-Global PRO*

## Product overview

NetScreen Technologies Inc.'s integrated security appliances are purpose-built network security appliances that combine firewall, Virtual Private Networking (VPN), and traffic management functions. Utilizing integrated security ASIC technology, all NetScreen security appliances feature very low latency, high throughput IPSec encryption and firewall functions, allowing them to seamlessly integrate into any network. Installation and management of NetScreen's appliances is easily accomplished via a number of management interfaces including a built-in WebUI, command line interface, or NetScreen's central management solutions.

## NetScreen ScreenOS

NetScreen ScreenOS firmware powers the entire system. At its core is a custom-designed, real time operating system built from the outset to deliver a very high level of security and performance. ScreenOS provides an integrated, easy-to-use platform for its many functions, including:

- ICSA certified stateful inspection firewall
- ICSA certified IPSec VPN gateway
- Traffic management capabilities for maximizing limited bandwidth
- High Availability to ensure maximum network reliability
- Rich set of management interfaces, both internal and external
- Dynamic routing support to ease integration of security into existing networks

## NetScreen's GigaScreen ASIC

NetScreen's GigaScreen security ASIC accelerates the firewall policy lookups and encryption and authentication algorithms in hardware. This is a significantly faster approach than a software-only approach that relies solely on the CPU. This security-accelerating ASIC is tightly integrated with NetScreen's ScreenOS operating system to eliminate unnecessary software layers and security holes found in other security products built on general-purpose commercial operating systems.

## Reliability and security of appliances

The ease of installation and robust manageability of NetScreen's all-in-one security appliances is complimented by its superior reliability and security capability. Without the inherent reliability issues associated with hard disk drives, appliances have proven to be the best long-term solutions when uptime is important. NetScreen appliances only require configuration and management of the firewall, VPN, and traffic management features, alleviating the need to configure separate hardware and complex operating systems. This limits the time required to install and maintain the security device and reduces the number of setup steps where security holes are often created.

# NetScreen Appliances

## NetScreen-200 Series



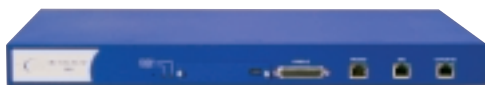
*NetScreen-208*



*NetScreen-204*

The NetScreen-200 Series includes two products, the NetScreen-204 and the NetScreen-208, differentiated by the number of 10/100 interfaces (four and eight respectively). Together, they are two of the most versatile security appliances available today, easily integrating into many different environments, including medium and large enterprise offices, e-business sites, data centers, and carrier infrastructures. Complete with either four or eight auto-speed-sensing, auto-polarity-correcting 10/100 Base-T Ethernet ports, the NetScreen-200 Series performs firewall functions at near wire-speed (550 Mbps on the NetScreen-208 and 400 Mbps on the NetScreen-204). Even the most computationally intense applications, such as 3DES and AES encryption, are performed at speeds greater than 200 Mbps.

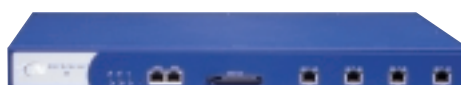
## NetScreen-100



*NetScreen-100*

The NetScreen-100 was one of the first truly integrated security solutions available, and continues to provide leading security functionality. Featuring three auto-sensing 10/100 Base-T Ethernet ports, the NetScreen-100 is designed to integrate into many different environments, including medium enterprise offices, e-business sites, and data centers.

## NetScreen-50 and NetScreen-25



*NetScreen-50*



*NetScreen-25*

The NetScreen-50 and NetScreen-25 offer a complete security solution for small- and medium-sized companies as well as enterprise branch and remote offices. Featuring four auto-sensing 10/100 Base-T Ethernet ports, the NetScreen-50 and NetScreen-25 provide for flexible deployment solutions where multiple DMZs are required, Wireless LAN segmentation, or segmentation of the internal network. The NetScreen-50 is a high performance security appliance, offering 170 Mbps of firewall and 50 Mbps of 3DES, with support for 8,000 sessions and 100 VPN tunnels. The NetScreen-25 has the same interfaces and offers 100 Mbps of firewall and 20 Mbps of 3DES VPN, and support for 4,000 sessions and 25 VPN tunnels.

## NetScreen-5XT and NetScreen-5XP



*NetScreen-5XT*



*NetScreen-5XP*

While at the entry level of the NetScreen appliance product line, the NetScreen-5XT and NetScreen-5XP offer enterprise-class solutions. Using the same firewall, VPN, and traffic management technology as NetScreen's high-end central site products, the NetScreen-5XT and NetScreen-5XP products are fully capable of securing a remote office, retail outlet, or a broadband telecommuter. Both the NetScreen-5XT and NetScreen-5XP are offered in two versions, a 10-user version supporting up to 10 users and an Elite version, supporting an unrestricted number of users. The NetScreen-5XP offers enterprise class security and manageability at the entry level. The NetScreen-5XT adds superior performance, an integrated four-port switch, additional memory and dial backup (available in future release of ScreenOS) for those enterprises requiring top performance and reliability at their remote offices.

## Firewall security

NetScreen's appliance product line provides comprehensive, scalable security solutions, encompassing broadband telecommuters to large corporate offices, e-business sites, and carrier networks. NetScreen's full-featured firewall uses technology based on stateful inspection, securing against intruders and Denial of Service (DoS) attacks. All appliances provide:

- Integrated solution with security-optimized hardware, operating system and firewall, which provides higher level of security than patched together software-based solutions
- Robust attack preventions, independently configurable on every interface, including SYN attack, ICMP flood, and Port Scan
- Network Address Translation (NAT), Port Address Translation (PAT), route, or transparent modes of operation
- NetScreen's ScreenOS software is an ICSA certified stateful inspection firewall

## Denial of Service protection

Denial of Service (DoS) and Distributed Denial of Service (DDoS) protections require purpose-built solutions that can handle large numbers of packets and sessions per second. NetScreen's appliances accelerate session setup in hardware, resulting in solutions that are able to protect against DoS and DDoS attacks while continuing to provide service to valid traffic. With these protections supported on every interface, NetScreen appliances provide additional protections against internal threats, Trojan worms or horses that launch DoS attacks from affected internal computers.

## User authentication

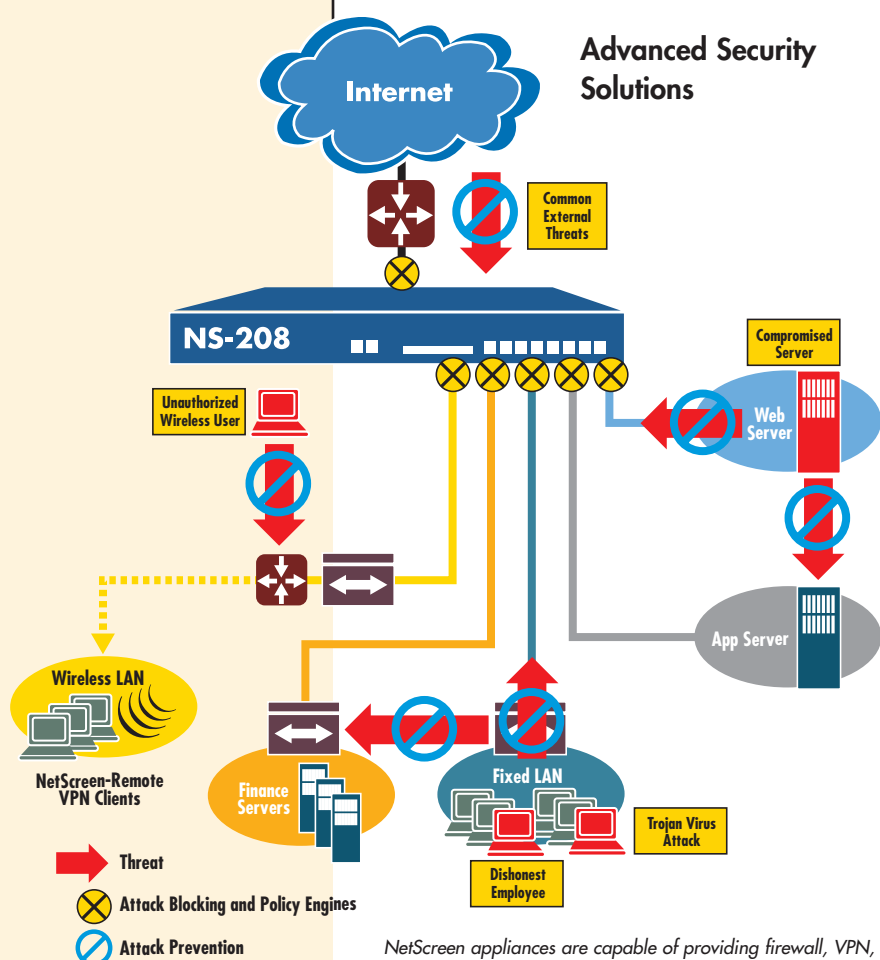
All NetScreen security appliances feature comprehensive user authentication features to control access to network resources. All appliances feature:

- User authentication via external RADIUS, SecurID, or LDAP servers, with support for redundant server definitions
- Internal user database support to alleviate the need for external servers
- Web-based authentication allows a user to be authenticated to the network via an Internet browser for any service
- XAUTH support to allow authentication of dial-up VPN users in addition to IPSec authentication, to prevent unauthorized users from accessing the network via a compromised device

## Virtual Private Networks

Integrated into all NetScreen appliances is a full-featured IPSec VPN solution enabling both site-to-site and remote access VPN applications. Key capabilities include:

- 3DES, DES and AES encryption using digital certificates (PKI X.509), IKE auto-key, or manual key
- SHA-1 and MD5 strong authentication
- Support for VPN tunnels on every interface allowing IPSec to be used to secure internal networks (e.g. a Wireless LAN)
- IPSec NAT traversal allows VPN tunnels to traverse intervening devices that perform NAT
- Support for mesh and hub and spoke VPN networks to provide customers the ability to deploy one, or a hybrid of both, to meet deployment requirements
- Redundant VPN gateways add an additional level of redundancy in a VPN network by allowing backup tunnel definitions in the event of a lost VPN connection
- ICSA and VPNC tested compatibility with other IPSec certified devices



NetScreen appliances are capable of providing firewall, VPN, and traffic management on every interface, allowing them to protect against threats from all sides, as well as secure next generation applications such as Wireless LANs.

## High Availability (device redundancy)

The NetScreen-50, NetScreen-100, and NetScreen-200 Series provide the most comprehensive security High Availability (HA) solution available today. All sessions and VPN tunnels are synchronized between the HA pair, providing near-zero interruption in the case of device failure. In addition, the NetScreen-100 and NetScreen-200 Series support Active/Active deployments allowing both devices to pass traffic, yet stay fully synchronized.

- Sub-second fail-over between interfaces or devices
- Active/Active load sharing provides for higher burst capacity than Active/Passive, and ensures both devices are working properly and simultaneously passing traffic
- Full mesh configurations (with the NetScreen-208) allows for redundant physical paths in the network and thereby provides maximum resiliency and uptime
- Provides leaderless clustering to prevent a single point of failure
- Path monitoring for up to 16 IP addresses to detect upstream or downstream failures in the network that are not directly connected to the NetScreen device

## Dynamic routing

Adding to the multiple levels of device redundancy, the NetScreen appliances integrate dynamic routing with OSPF and BGP. While not designed for core Internet routing functions, dynamic routing allows a NetScreen device to integrate with the routing infrastructure for both firewall and VPN functions, providing for increased redundancy and support for multiple ISPs. In a VPN environment, in conjunction with tunnel interfaces and redundant VPN gateways, multiple VPN tunnels can be defined to a given location. Based on the routing decision, the best VPN tunnel will be used for traffic. In addition, route changes can be pushed out to a large VPN network, allowing less administrative requirements when networks change.

Note: OSPF and BGP are not supported on the NetScreen-5XP or NetScreen-100.

## Traffic management

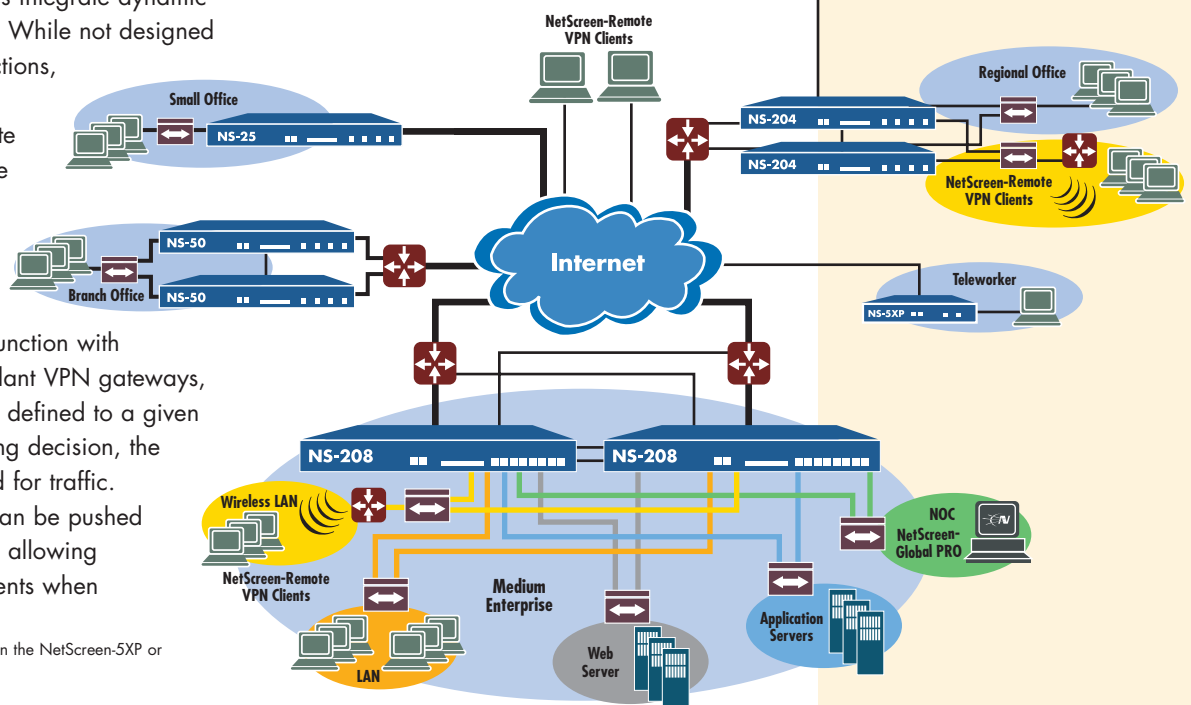
Traffic management enables a network administrator to monitor, analyze, and allocate bandwidth utilized by various types of network traffic in real time, helping to ensure that business-critical traffic isn't impacted by web surfing or other non-critical applications. Key defining criteria for traffic management include:

- Manage based on IP address, user, application, or time of day
- Set guaranteed bandwidth and maximum bandwidth
- Up to eight prioritization levels
- Support for industry standard DiffServ packet marking, allowing a NetScreen security appliance to signal QoS to an MPLS network

## PPPoE and DHCP client/server

All NetScreen appliances may function as a DHCP or PPPoE client, having their Untrusted interface IP address and network parameters set dynamically for ease of integration into networks that utilize this technology, such as DSL and cable networks. In addition, all NetScreen appliances can act as DHCP servers, providing IP addresses dynamically to hosts on the internal network.

## Complete Solutions for all Environments



Complete security solution for any sized environment, including central management solutions to tie all of the pieces together.

### Graphical WebUI

All NetScreen appliances feature a fully functional graphical interface, the WebUI, accessible through HTTP or HTTPS (SSL). Significantly enhanced with ScreenOS 4.0, the WebUI offers an “at-a-glance” home page including a graphical representation of the current device status. In addition, the new WebUI offers menu-driven device configuration wizards to simplify tasks such as creating VPN tunnels.

- Dynamic HTML and Java-based menus
- Accessible through HTTP or for added security with HTTPS (SSL)
- Configuration wizards for easy firewall policy and VPN setup
- View events, logs, and device status

### Command Line Interface

All NetScreen appliances offer a full-featured Command Line Interface (CLI), accessible through the console port, SSH, or Telnet. The CLI supports all device commands, and includes debugging commands helpful when troubleshooting network problems.

### NetScreen-Global PRO and NetScreen-Global PRO Express

NetScreen-Global PRO and NetScreen-Global PRO Express are NetScreen’s central management solutions. The NetScreen-Global PRO line empowers network and security managers to manage hundreds, and even thousands, of devices. Key to the NetScreen-Global PRO line is its ability to create and deploy firewall and VPN policies to NetScreen products rapidly with its easy-to-use and intuitive policy management capabilities. Multi-administrator/multi-Network Operation Center (NOC) configuration management greatly reduces administration costs while increasing overall policy control.

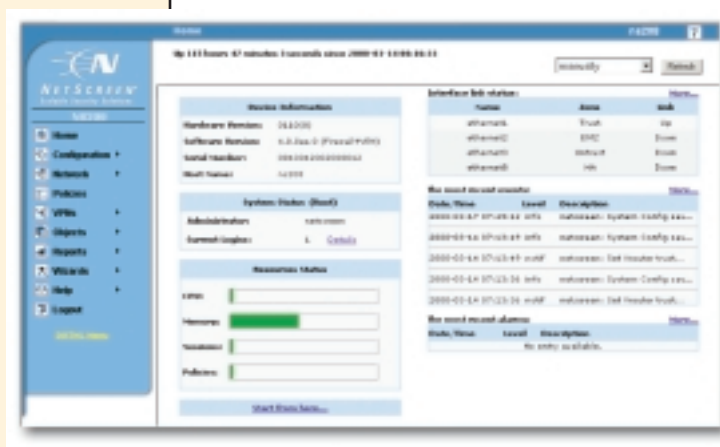
The NetScreen-Global PRO line offers critical fault and performance reporting capabilities. A wide range of informative realtime and historical reports can be generated to gain critical insight into usage trends, performance baselines, SLA parameters, and security events for NetScreen integrated security solution deployments. In addition, performance and uptime of VPN networks can be tracked using the VPN monitoring capabilities.

### Easy setup and installation

All NetScreen appliances are designed for easy setup and installation. The integrated design of the products alleviates the need to install and configure a layered operating system and separate software solution. NetScreen’s WebUI is easily accessible through an Internet browser, and provides an installation wizard to ease the initial configuration. Simplifying the setup process not only reduces the time required to deploy NetScreen appliances, but also helps reduce the complexity of the installation. Simplifying the setup and administration of the security solutions minimizes configuration errors that can cause security vulnerabilities.

### Flexible deployment options

All NetScreen appliances feature many options for deployment into new or existing networks. Route and NAT options allow NetScreen devices to be deployed with IP addresses assigned to their interfaces. These modes can be assigned to each interface independently, allowing some interfaces to be set to Route mode, such as those connected to servers in the DMZ, while other interfaces can be set to NAT mode, such as those supporting the internal private LAN. Transparent mode, on the other hand, allows a NetScreen appliance to be deployed as a Layer 2 security device, providing firewall, VPN, and traffic management functionality. In Transparent mode, the interfaces do not have IP addresses, so this mode of operation can significantly ease deployments into existing networks.



# Appliance Features

Feature	NetScreen-200 Series (1)	NetScreen-100 (1)	NetScreen-50 (1)	NetScreen-25 (1)	NetScreen-5XT (1) NetScreen-5XP (1)
<b>Performance</b>					
Concurrent sessions	128,000	128,000 (4)	8,000	4,000	2,000
New sessions/second	13,000	8,000	8,000	4,000	2,000
Firewall performance	400 or 550 Mbps	200 Mbps	170 Mbps	100 Mbps	5XT – 70 Mbps 5XP – 20 Mbps
3DES (168 bit)	200 Mbps	170 Mbps	50 Mbps	20 Mbps	5XT – 20 Mbps 5XP – 13 Mbps
Policies	4,000	4,000	1,000	500	100
Schedules	256	256	256	256	256
Interfaces	4 or 8 10/100 Base-T	3 10/100 Base-T	4 10/100 Base-T	4 10/100 Base-T	5XT – 1 10/100 Base-T Untrust 4 10/100 Base-T Trust 5XP – 1 10 Base-T Untrust 1 10 Base-T Trust
<b>Mode of Operation</b>					
Transparent mode (all interfaces)	Yes	Yes	Yes	Yes	Yes
Route mode (per interface)	Yes	Yes	Yes	Yes	Yes
NAT (per interface)	Yes	Yes	Yes	Yes	Yes
Policy-based NAT	Yes	Yes	Yes	Yes	Yes
PAT	Yes	Yes	Yes	Yes	Yes
Virtual IP	4	4	2	2	1
Mapped IP	4,000	4,000	1,000	500	32
Users per port, Trusted	Unrestricted	Unrestricted	Unrestricted	Unrestricted	10 or Unrestricted
<b>Routing</b>					
Virtual routers	2	2	2	2	2
OSPF/BGP dynamic routing	Yes, up to 2 instances ea.	No	Yes, up to 2 instances ea.	Yes, up to 2 instances ea.	NetScreen-5XT: Yes NetScreen-5XP: No
Routes	4,000	2,000	2,000	2,000	1,000
<b>IP Address Assignment</b>					
Static	All	All	All	All	All
DHCP client	Untrusted interface	Untrusted interface	Untrusted interface	Untrusted interface	Untrusted interface
PPPoE client	Untrusted interface	Untrusted interface	Untrusted interface	Untrusted interface	Untrusted interface
Internal DHCP server	Trusted interfaces	Trusted interfaces	Trusted interfaces	Trusted interfaces	Trusted interfaces
DHCP relay	Yes	Yes	Yes	Yes	Yes
<b>Network Attack Protections (3)</b>					
Number of attacks detected	31	31	31	31	31
DoS and DDoS protections	Yes	Yes	Yes	Yes	Yes
Malformed packet protections	Yes	Yes	Yes	Yes	Yes
Malicious packet protections	Yes	Yes	Yes	Yes	Yes
Firewall attack protections configurable per zone	Yes	Yes	Yes	Yes	Yes
<b>VPN</b>					
Dedicated VPN tunnels	1,000	1,000	100	25	10
Manual Key, IKE, PKI (X.509)	Yes	Yes	Yes	Yes	Yes
DES (56-bit), 3DES (168-bit) and AES encryption	Yes	Yes	Yes	Yes	Yes
Perfect forward secrecy (DH Groups)	1,2,5	1,2,5	1,2,5	1,2,5	1,2,5
Prevent replay attack	Yes	Yes	Yes	Yes	Yes
Remote access VPN	Yes	Yes	Yes	Yes	Yes
L2TP within IPSec	Yes	Yes	Yes	Yes	Yes
Site-to-site VPN	Yes	Yes	Yes	Yes	Yes
Star (hub and spoke) VPN network topology	Yes	Yes	Yes	Yes	Yes
IPSec NAT traversal	Yes	Yes	Yes	Yes	Yes
Tunnel interfaces	256	50	50	25	10
Redundant VPN gateway	Yes	Yes	Yes	Yes	Yes
<b>IPSec Authentication</b>					
SHA-1	Yes	Yes	Yes	Yes	Yes
MD5	Yes	Yes	Yes	Yes	Yes
PKI certificate requests (PKCS 7 and PKCS 10)	Yes	Yes	Yes	Yes	Yes
Automated certificate enrollment (SCEP)	Yes	Yes	Yes	Yes	Yes
Online Certificate Status Protocol (OCSP)	Yes	Yes	Yes	Yes	Yes
<b>Certificate Authorities Supported</b>					
VeriSign CA	Yes	Yes	Yes	Yes	Yes
Entrust CA	Yes	Yes	Yes	Yes	Yes
Microsoft CA	Yes	Yes	Yes	Yes	Yes
RSA Keon CA	Yes	Yes	Yes	Yes	Yes
iPlanet (Netscape) CA	Yes	Yes	Yes	Yes	Yes
Baltimore CA	Yes	Yes	Yes	Yes	Yes
DOD PKI CA	Yes	Yes	Yes	Yes	Yes

# Appliance Features

Feature	NetScreen-200 Series (1)	NetScreen-100 (1)	NetScreen-50 (1)	NetScreen-25 (1)	NetScreen-5XT (1) NetScreen-5XP (1)System
<b>Firewall and VPN User Authentication</b>					
Built-in (internal) database - user limit	1,500	1,500	500	250	100
RADIUS (external) database	Yes	Yes	Yes	Yes	Yes
RSA SecureID (external) database	Yes	Yes	Yes	Yes	Yes
LDAP (external) database	Yes	Yes	Yes	Yes	Yes
RADIUS authentication accounting	Yes	Yes	Yes	Yes	Yes
XAUTH VPN authentication	Yes	Yes	Yes	Yes	Yes
Web-based authentication	Yes	Yes	Yes	Yes	Yes
<b>Traffic Management</b>					
Guaranteed bandwidth	Yes	Yes	Yes	Yes	Yes
Maximum bandwidth	Yes	Yes	Yes	Yes	Yes
Priority-bandwidth utilization	Yes	Yes	Yes	Yes	Yes
DiffServ stamp	Yes	Yes	Yes	Yes	Yes
<b>High Availability (HA)</b>					
High Availability	Yes	Yes	Active/Passive Only	No	No
Redundant interfaces/full mesh	Yes	No	No	No	No
Session protection for firewall and VPN	Yes	Yes	Yes	No	No
Device failure detection	Yes	Yes	Yes	No	No
Link failure detection	Yes	Yes	Yes	No	No
Network notification on fail-over	Yes	Yes	Yes	No	No
Authentication for new HA members	Yes	Yes	Yes	No	No
Encryption of HA traffic	Yes	Yes	Yes	No	No
<b>Management</b>					
WebUI (HTTP and HTTPS)	Yes	Yes	Yes	Yes	Yes
Command Line Interface (console)	Yes	Yes	Yes	Yes	Yes
Command Line Interface (telnet)	Yes	Yes	Yes	Yes	Yes
Secure Command Shell (SSH v1.5 compatible)	Yes	Yes	Yes	Yes	Yes
NetScreen-Global PRO	Yes (2)	Yes (2)	Yes (2)	Yes (2)	Yes (2)
NetScreen-Global PRO Express	Yes (2)	Yes (2)	Yes (2)	Yes (2)	Yes (2)
All management via VPN tunnel on any interface	Yes	Yes	Yes	Yes	Yes
SNMP full custom MIB	Yes	Yes	Yes	Yes	Yes
<b>Administration</b>					
Local administrators database	20	20	20	20	20
External administrator database	RADIUS/LDAP/SecurID	RADIUS/LDAP/SecurID	RADIUS/LDAP/SecurID	RADIUS/LDAP/SecurID	RADIUS/LDAP/SecurID
Restricted administrative networks	6	6	6	6	6
Root admin, admin, and read only user levels	Yes	Yes	Yes	Yes	Yes
Software upgrades and config changes	TFTP/Web UI/Global	TFTP/Web UI/Global	TFTP/Web UI/Global	TFTP/Web UI/Global	TFTP/Web UI/Global
<b>Logging/Monitoring</b>					
Syslog	External	External	External	External	External
E-mail (2 addresses)	Yes	Yes	Yes	Yes	Yes
NetIQ WebTrends	External	External	External	External	External
SNMP	Yes	Yes	Yes	Yes	Yes
Traceroute	Yes	Yes	Yes	Yes	Yes
VPN tunnel monitor	Yes	Yes	Yes	Yes	Yes
Websense URL filtering	External	External	External	External	External
<b>External Flash</b>					
CompactFlash™	96, 128 or 512 MB options	No	96, 128 or 512 MB options	96, 128 or 512 MB options	No
PCMCIA Flash	No	96 MB option	No	No	No
Event logs and alarms	Yes	Yes	Yes	Yes	No
System config script	Yes	Yes	Yes	Yes	No
ScreenOS software	Yes	Yes	Yes	Yes	No
<b>Dimensions and Power</b>					
Height	1.73 inches	1.73 inches	1.73 inches	1.73 inches	1.25 inches
Width	17.5 inches	17.5 inches	17.5 inches	17.5 inches	5XT – 8 inches 5XP – 6 inches
Length	10.8 inches	10.8 inches	10.8 inches	10.8 inches	5 inches
Weight	8 lbs.	8 lbs.	8 lbs.	8 lbs.	5XT – 1.5 lb. 5XP – 1 lb.
Rack mountable	Yes	Yes	Yes	Yes	Yes, with separate kit
Power Supply (AC)	90 to 264 VAC, 45 W	90 to 264 VAC, 30 W	90 to 264 VAC, 45 W	90 to 264 VAC, 45 W	5XT – 90 to 264 VAC, 12W 5XP – 90 to 264 VAC, 7.5W
Power Supply (DC)	-36 to -60 VDC, 50 W	-36 to -72 VDC, 30 W	-36 to -60 VDC, 50 W	-36 to -60 VDC, 50 W	N/A

(1) Performance, capacity, and features provided with NetScreen ScreenOS 4.0. May vary with other NetScreen ScreenOS releases.

(2) NetScreen ScreenOS 4.0 supported in future release of NetScreen-Global PRO/PRO Express.

(3) See NetScreen product documentation for a complete list of firewall attack protections.

(4) Some versions of NetScreen-100 hardware will only support 64,000 sessions. See NetScreen ScreenOS 4.0 release notes for details.

# Specifications and Ordering Information

## Specifications:

### Standards supported

ARP, TCP/IP, UDP, ICMP, HTTP, RADIUS, LDAP, SecurID, IPSec (ESP, AH), MD5, SHA-1, AES, DES, 3DES, L2TP, IKE (ISAKMP), TFTP (client), SNMP, X.509v3, DHCP, PPPoE, SCEP, OCSP

### Safety Certifications

UL, CUL, CSA, CB, NEBS Level 3\*\*

\*\*NetScreen-208 with DC power

### EMC Certifications

*NetScreen-5XP and NetScreen-5XT:*

FCC class B, BSMI, CE class B, C-Tick, VCCI class B

*NetScreen-25, NetScreen-50, NetScreen-100, NetScreen-200 Series:*

FCC class A, BSMI, CE class A, C-Tick, VCCI class A

### Environment

Operational Temperature: 23 to 122 degrees F, -5-50 degrees C

Non-Operational Temperature: -4 to 158 degrees F, -20 to 70 degrees C

Humidity: 10-90%, non-condensing

### MTBF (Bellcore model)

NetScreen-5XP: 8.8 years

NetScreen-5XT: 8.5 years

NetScreen-25: 8.1 years

NetScreen-50: 8.1 years

NetScreen-100: 6.4 years

NetScreen-204: 6.8 years

NetScreen-208: 6.5 years



350 Oakmead Parkway  
Sunnyvale, CA 94085  
Phone: 408.730.6000  
Fax: 408.730.6200

[www.netscreen.com](http://www.netscreen.com)

## Ordering information:

### Product

### Part Number

#### NetScreen-208 w/AC power supply

NetScreen-208	US power cord	NS-208-001
NetScreen-208	UK power cord	NS-208-003
NetScreen-208	Europe power cord	NS-208-005
NetScreen-208	Japan power cord	NS-208-007

#### NetScreen-208 w/DC power supply

NetScreen-208		NS-208-001-DC
---------------	--	---------------

#### NetScreen-204 w/AC power supply

NetScreen-204	US power cord	NS-204-001
NetScreen-204f*	US power cord	NS-204-101
NetScreen-204	UK power cord	NS-204-003
NetScreen-204f*	UK power cord	NS-204-103
NetScreen-204	Europe power cord	NS-204-005
NetScreen-204f*	Europe power cord	NS-204-105
NetScreen-204	Japan power cord	NS-204-007
NetScreen-204f*	Japan power cord	NS-204-107

#### NetScreen-204 w/DC power supply

NetScreen-204		NS-204-001-DC
---------------	--	---------------

#### NetScreen-100 w/AC power supply

NetScreen-100a	US power cord	NS-100-001
NetScreen-100e	(56-bit DES only)	NS-100-002
NetScreen-100f*	(firewall only)	NS-100-003

#### NetScreen-100 w/DC power supply

NetScreen-100a		NS-100-001-DC
----------------	--	---------------

#### NetScreen-50 w/AC power supply

NetScreen-50	US power cord	NS-050-001
NetScreen-50f*	US power cord	NS-050-101
NetScreen-50	UK power cord	NS-050-003
NetScreen-50f*	UK power cord	NS-050-103
NetScreen-50	Europe power cord	NS-050-005
NetScreen-50f*	Europe power cord	NS-050-105
NetScreen-50	Japan power cord	NS-050-007
NetScreen-50f*	Japan power cord	NS-050-107

#### NetScreen-50 w/DC power supply

NetScreen-50		NS-050-001-DC
--------------	--	---------------

#### NetScreen-25

NetScreen-25	US power cord	NS-025-001
NetScreen-25	UK power cord	NS-025-003
NetScreen-25	Europe power cord	NS-025-005
NetScreen-25	Japan power cord	NS-025-007

\* "f" products do not include VPN functionality (international only)

Copyright © 1998-2002 NetScreen Technologies, Inc.

NetScreen, NetScreen Technologies, and the NetScreen logo are registered trademarks of NetScreen Technologies, Inc. NetScreen-5XP, NetScreen-5XT, NetScreen-25, NetScreen-50, NetScreen-100, NetScreen-204, NetScreen-208, NetScreen-500, NetScreen-1000, NetScreen-5200, NetScreen-5400, NetScreen-Global PRO, NetScreen-Global PRO Express, NetScreen-Remote, GigaScreen ASIC, GigaScreen-II ASIC and NetScreen ScreenOS are trademarks of NetScreen Technologies, Inc. All other trademarks and registered trademarks are the property of their respective companies.

Part Number: 2002.7.50.3.aps

### Product

### Part Number

#### NetScreen-5XT 10-user

NetScreen-5XT	US power cord	NS-5XT-001
NetScreen-5XT	UK power cord	NS-5XT-003
NetScreen-5XT	Europe power cord	NS-5XT-005
NetScreen-5XT	Japan power cord	NS-5XT-007

Upgrade from NetScreen-5XT 10-user to NetScreen-5XT Elite

NS-5XT-ELU

#### NetScreen-5XT Elite (unrestricted users)

NetScreen-5XT Elite	US power cord	NS-5XT-101
NetScreen-5XT Elite	UK power cord	NS-5XT-103
NetScreen-5XT Elite	Europe power cord	NS-5XT-105
NetScreen-5XT Elite	Japan power cord	NS-5XT-107
Rack mount kit for 2 NetScreen-5XTs		NS-5XT-RMK

#### NetScreen-5XP 10-user

NetScreen-5XP	US power cord	NS-5XP-001
NetScreen-5XP	UK power cord	NS-5XP-003
NetScreen-5XP	Europe power cord	NS-5XP-005
NetScreen-5XP	Japan power cord	NS-5XP-007

Upgrade from NetScreen-5XP 10-user to NetScreen-5XP Elite

NS-5XP-ELU

#### NetScreen-5XP Elite (unrestricted users)

NetScreen-5XP Elite	US power cord	NS-5XP-101
NetScreen-5XP Elite	UK power cord	NS-5XP-103
NetScreen-5XP Elite	Europe power cord	NS-5XP-105
NetScreen-5XP Elite	Japan power cord	NS-5XP-107
Rack mount kit for 2 NetScreen-5XP		NS-5XP-RMK

Please see [www.netscreen.com/products](http://www.netscreen.com/products) for the latest information and features of NetScreen's entire line of products.

## NetScreen product warranty and services

Every NetScreen product includes standard warranty features that assure the customer can deploy them confidently. E-mail based technical assistance is available on NetScreen appliances, systems and management products for one year. Hardware products come with a full year of standard RMA coverage in the unlikely event of failure. Both hardware and software products come with a short-term software service that provides any software feature releases or maintenance releases within 90 days of purchase.

**For more information about NetScreen services or products, please call toll-free 1-800-638-8296 in the US, +44 8700 750000 in Europe, or 852-2519-3988 in Hong Kong, or visit us at [www.netscreen.com](http://www.netscreen.com).**