

# CacheEnforcer™

## NetEnforcer Proxy Caching Services

---

### Features

- Central location for enforcing network caching policies
  - Enable transparent caching and reduce network administration
  - Define centralized caching policies that efficiently control Web traffic
- 

### Introduction

As network users continue to expect more and more performance from the Web, caching and other proxy servers are being installed to store data closer to the requestors. Increased numbers and complexity of cache servers have created the need for network managers to define caching policies to make efficient use of network resources. Allot Communications' CacheEnforcer™ provides a one-stop solution for managing and enforcing user access to cache servers.

### Optimize Caching Services

As caching needs and demands grow, the CacheEnforcer lets network managers seamlessly add servers and distribute traffic according to the individual capabilities of each server. CacheEnforcer simplifies caching administration by giving network managers a single point to manage multiple cache servers.

Servers can be segmented into categories such as video cache servers, HTML cache servers, and FTP cache servers. Each server can be assigned a weight according to its ability to deliver pages to users. Traffic coming from remote servers can be assigned to the appropriate cache server based on their individual services and capabilities. In addition, CacheEnforcer can automatically redirect traffic to alternate caching servers should the main cache server go down or, if no alternate server is available, send the request directly to the actual remote server. This provides a complete, fault tolerant system.

Policies can be created to optimize which data is directed to local cache and which data is sent to

remote, non-cached servers. Cache policies can be defined, enforced, and optimized according to specific traffic information such as network addresses, protocols, services, applications, and time-of-day.

### Simplify Adds, Moves, and Changes

Through the CacheEnforcer, network managers can avoid the headaches associated with adds, moves, and changes of proxy and cache servers. With traditional proxy caching, every user browser must be configured to point to the cache. In the case of transparent proxy caches, each client must be configured to direct all default traffic through the cache. With the CacheEnforcer, traffic traveling to the Internet is *automatically* diverted to the appropriate server according to policies you have defined. Using the CacheEnforcer, it is not necessary to configure each client to go to the appropriate server. All configurations of cache servers is done at one location – on the CacheEnforcer.

### Enforce Caching Policies

Because the CacheEnforcer sits in front of your WAN or Internet link, all outbound traffic passes through it. By setting appropriate policies on the CacheEnforcer, network managers, not individual users, determine the appropriate caching policies for the entire network.

Through the CacheEnforcer, traffic can be directed to specific cache servers and exceptions such as CGI scripts can be sent directly to the Internet. For further control of network bandwidth, policies can be created to manage and update requests from



the cache servers to the Internet. The end result is an efficient, policy-based system for managing the flow of traffic into and out of your network cache servers.

### Integrated Services

The CacheEnforcer is part of the Allot Policy Based Networking system that integrates bandwidth management, server load-balancing, network monitoring, as well as accounting in a single system. By deploying this type of integrated solution, network managers use the same rules and policies to control the entire flow of traffic to the Internet.

### Summary

Web caching provides valuable benefits by improving network performance and reducing bandwidth congestion of costly Internet links. Using Allot Communications' CacheEnforcer, network managers can improve the user experience by increasing the cache hit ratio, limiting administration costs of cache configuration, and enforcing centrally defined caching policies. CacheEnforcer, used in conjunction with the Allot NetEnforcer System of bandwidth management products, provides an optimal system for maximizing the use of Internet and WAN links using common policies defined according to the needs and requirements of the network users.

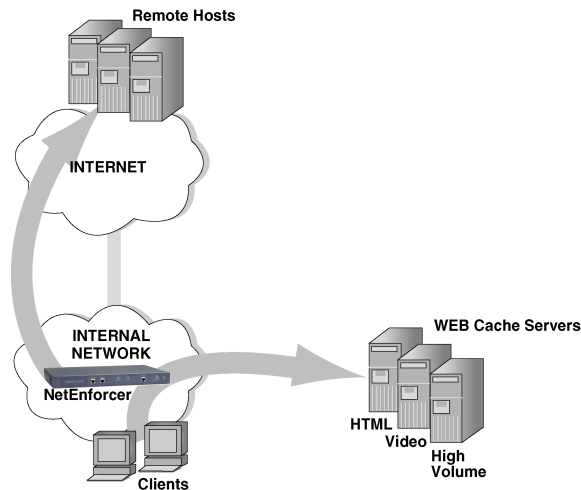


Figure 1. The CacheEnforcer examines all client traffic, redirecting traffic to the appropriate cache server according to predefined policies. Non-cached traffic is automatically forwarded directly to the Internet or WAN.

### Ordering Information

Part No.	Product
S001890	CacheEnforcer™ for NetEnforcer™ AC-101/128, AC-101/512
S002890	CacheEnforcer™ for NetEnforcer™ AC-201/2M, AC-201/10M
S003890	CacheEnforcer™ for NetEnforcer™ AC-301
S004890	CacheEnforcer™ for NetEnforcer™ AC-401
S006890	CacheEnforcer™ for NetEnforcer™ AC-601
S007890	CacheEnforcer™ for NetEnforcer™ AC-701/C and AC-701/F

Americas	Western Europe	Asia Pacific	Japan	Eastern Europe, Middle East and Africa
250 Prairie Center Drive #335 Eden Prairie, MN 55344 USA Tel: (952) 944-3100 Fax: (952) 944-3555	World Trade Center 1300, Route Des Cretes BP 255 Sophia Antipolis Cedex France 06905 Tel 33-(0)4-92-38-80-27 Fax 33-(0)4-92-38-80-33	9 Raffles Place #27-01 Republic Plaza Singapore 048619 Tel: 65-832-5663 Fax: 65-832-5662	Nishi Ginza Bldg 2F 5-5-9 Ginza Chuo-ku Tokyo 104-0061 Japan Tel 81-(0)3-5537-7114 Fax 81-(0)3-5537-5281	5 Hanagar Street Industrial Zone Hod-Hasharon, 45800 Israel Tel 972-(0)9-761-9200 Fax 972-(0)9-744-3626
<b>Web</b> www.allot.com <b>Email</b> info@allot.com				